



RAPHAEL
LOGISTICS (T) LTD

LIFTING LIFE



AREAS OF SPECIALIZATION

BULK CARGO

ABNORMAL CARGO

OUT OF GAUGE HEAVY LOAD MATERIAL HANDLING

ENGINEERING SOLUTIONS

HEAVY LIFTING

PLANT EQUIPMENT HIRE

M4/71/03/2025 MECHANICAL CONTRACTOR CLASS 4

C2/169/03/2025 CIVIL CONTRACTOR CLASS 2

B2/224/03/2025 BUILDING CONTRACTOR CLASS 2

ABOUT US

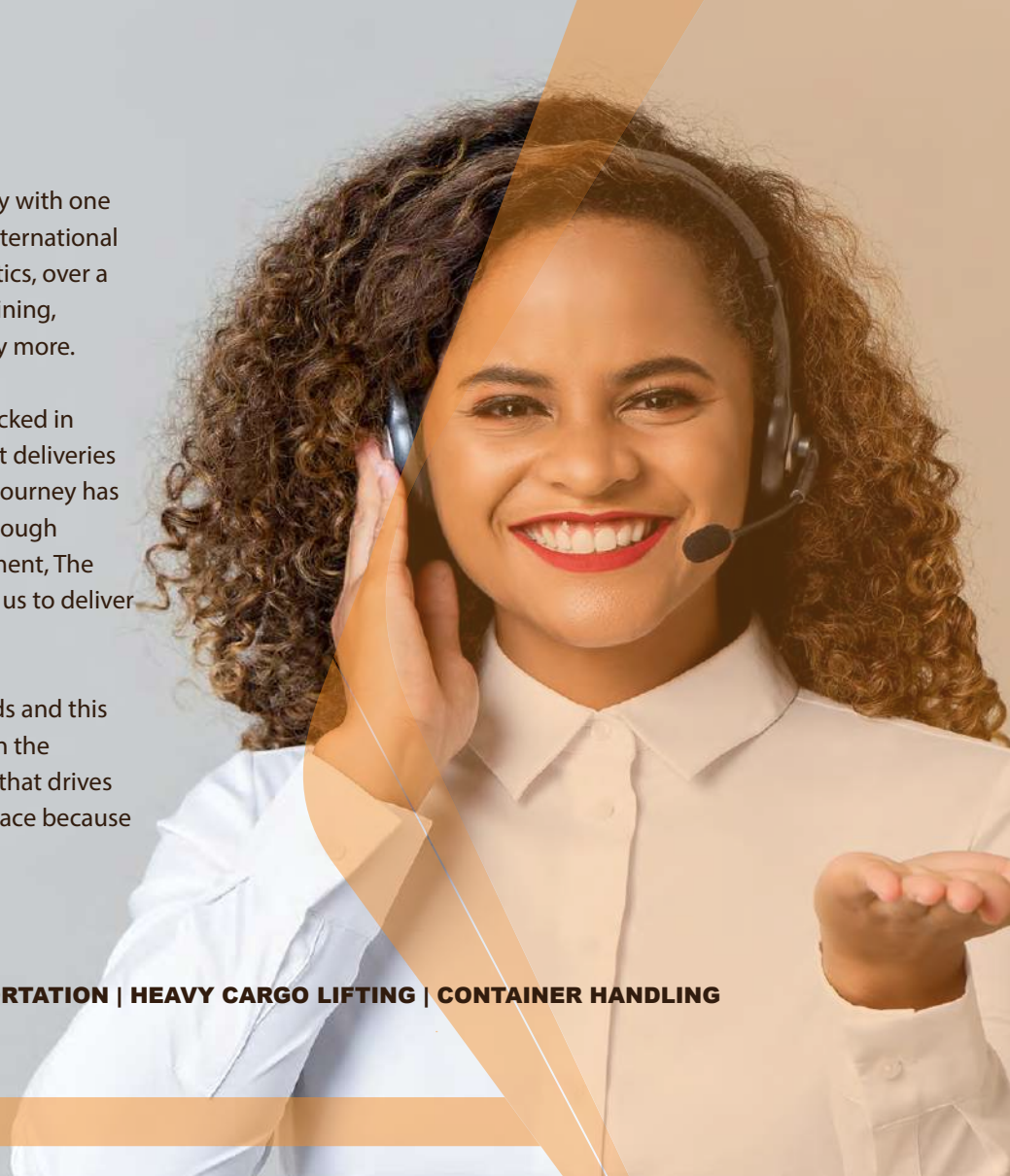
RAPHAEL LOGISTICS is Tanzania's leading Heavy Lift Logistics company with one of the youngest fleet of heavy lift equipment and a mix of local and international personnel specialized in all areas of Port handling and mainland logistics, over a wide range of services and cargo from energy, agriculture, cement, mining, transport, warehousing, storage, plant assembly, shut down and many more.

We know the East, Central and South African regions well and have racked in countless miles of service to our customers, including risky equipment deliveries in the war torn countries of Southern Sudan and parts of Congo. Our journey has seen us work for the United Nations on its peace keeping missions through MUNISCO, The American Embassy in Tanzania, The Sudanese Government, The Zambian Government, amongst many other clients who have trusted us to deliver their delicate cargo where it's needed most and on time.

Over the years, we have had the privilege of winning numerous awards and this has just made us work harder. However, it's the work that we do within the communities that we live and come across as we travel the continent that drives us most. We know deep down that we will leave the planet a better place because we passed by.

WHAT WE DO BEST

CONSTRUCTION EQUIPMENT HIRE | HEAVY CARGO TRANSPORTATION | HEAVY CARGO LIFTING | CONTAINER HANDLING



living

A DREAM
takes commitment

Born in Kilimanjaro region in 1979, Raphael Tesha's story reads like a fairy tale. He spent his formative years in "Pasua" area of Moshi "Mjini" and a twist of fate would present itself when he journeyed with his mother to Dar es salaam on invitation from her brothers. The young Raphael went to school in Tandika Primary school in Dar es salaam and later pursued a trade at the Moshi Technical college. After completing college, the young Tesha got an opportunity to serve in the government as a Fork Lift Operator, a job he not only loved but one that would define he's destiny. Here Raphael got to understand why these strange machines were in such big demand and that's where the seed to pursue his dream was planted.

Using his savings, Raphael ordered his first 3 ton Fork Lift from the UK in 2007, rented another fork and set off on an entrepreneurial journey that would see him grow to become one of the regions most respected logistic partners. Today the company owns the only two 96 wheel, special Modular trailers in the country amongst it's 7 million USD equipment portfolio and was placed 5th in the 2018 Top Mid Sized Companies Award in Tanzania.

"Our journey has hardly began" say's Raphael about this journey.



Raphael Tesha

CEO RAPHAEL LOGISTICS



VISION

Our vision is to become Africa's leading partner of choice in Heavy Lifting Logistic solutions

MISSION

Our mission is to 'make light of heavy lifting' by engaging the latest innovative technology in heavy lift and hiring the best skilled workforce available globally to deliver for our clients.

OUR VALUES

Simplicity

Open Minded

Building as a TEAM

Growing our people

Customer Commitment

Constant Improvement

Innovation to create Solutions

Making the World a Better place

THE HEAVIEST LIFT WE DO IS IN DREAMS

We have never forgotten that over 129 families walk through our gates everyday represented in every member of our staff, each one carrying the fragile dreams of their families. We cherish their valuable contribution and over time we have become family and we wouldn't have liked it any other way. Our commitment to our staff and the dreams that they have put in our hands continues to grow as we share this exciting journey together.

To our clients, this means the privilege of being served by family, an experience we hope you will enjoy at Raphael Logistics.

Welcome to our family.

Goodness Tesha

Chairman
Raphael Logistics Limited
Board of Directors





DREAMS DO COME TRUE

OUR FOOTPRINTS

Along this exciting journey here are some of our most memorable footprints

We have contributed in excess of 1.5 million USD in taxes and made life better for many families amongst the 58 million people who call Tanzania home.

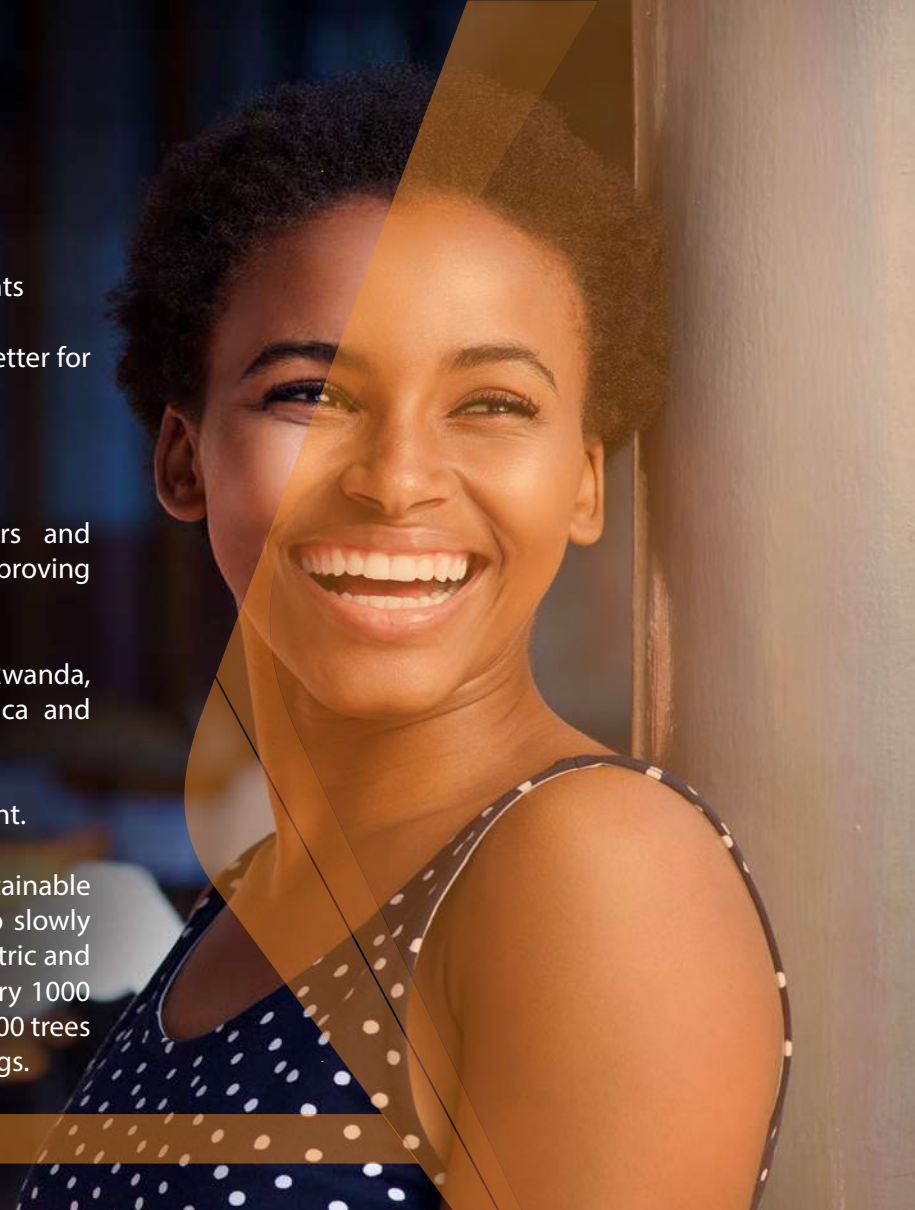
We have maintained a steady 10% per annual growth over the last 3 years.

We have engaged over 126 permanent staff, over 500 casual contractors and created 50 Technical Intern positions a year in our organization, greatly improving the living standards for many families and their communities.

Our network spans 12 African countries including Uganda, Kenya, Sudan, Rwanda, Burundi, Congo, Zambia, Malawi, Mozambique, Zimbabwe, South Africa and Botswana making us a Pan African entity.

We have invested in excess of 7 million USD in heavy lift logistics equipment.

Our Corporate Social Responsibility programs have developed into 3 sustainable initiatives in energy, environment and a community orphanage. We are also slowly phasing out equipment that has high emissions and replacing it with electric and gas driven models. Our 'Trees for miles' initiative that grows trees for every 1000 kilometers of road traveled to reduce our carbon footprint has planted 4,000 trees in the Ngara region of Tanzania and developed its own nursery for seedlings.





0 CARBON FOOT PRINT IS A DREAM WE INTEND TO FULFILL



INSPIRED
BY NATURE





WE ONLY SEE COLORS THAT MAKE US SAFE

Making the world a better place begins in our workplace, the space we spend most of our lives in. Our human resource policy is one of equal rights and encourages gender balance with special emphasis on those who need us most. Creating opportunities that we know wouldn't come that easy is something we love to do.

KEY ACCOUNTS ACQUISITION



TANZANIA CIGARETTE
COMPANY
AGGREKO
IMPALA MINING
UN MUNISCO
BOLLORE AFRICA
LOGISTICS
FREIGHT MERIDIAN
DSM. CORRIDOR
GROUP
TANZANIA BREWERIES
JOHNSON GROUP
MUSOMA WATER
PROJECT
SYMBION POWER
DHL Congo Logistics
ACCACIA (Buswagi mine)
QUALITY PULSE

2007
2008
2009
2010
2011
2012
2013



MAMUT
AFRI ICD
STRABAG
CASPIAN
TANESCO
TANZANIA BUILDING AGENCY
BOLORE AFRICA LOGISTICS
RESCUE AND EVACUATION
TANZANIA BREWERIES MBEYA
TANZANIA BREWERIES
AGA KHAN HOSPITAL

2014
2015



AGGREKO
COKE COLA
CLINTON FOUNDATION
BANRO CORPORATION
KANGAROO MINING
SWISSPORT TANZANIA
TANZANIA BREWERIES
JAMBO PLASTIC
GROUP RUBUYE
SCHLUMBERGER
BANRO MINING CORPORATION
GOVT. OF SOUTH SUDAN
TANESCO TANGA & KINYEREZI 2
BANRO CORPORATION, NAMOYA
TANZANIA PORTLAND CEMENT
SWISS PORT TANZANIA
NATIONAL RAILWAY COMPANY
OF CONGO

2017



TANESCO
CSI ENGINEERING
USANGU LOGISTICS
RUSH WALK
YAPI MERKEZI
SWISS PORT TZ.
EDEN VILLE INT. TZ (LTD)
NYANZA BOTTLERS
(MWANZA)
CAMEL CEMENT
SPEDAG FREIGHT
TANZANIA CIGARETTE
COMPANY

2018



PAN AFRICAN ENERGY
TANZANIA CIGARETTE
COMPANY
SPEDAG INTER FREIGHT
SUNSHINE TRANSPORTER
TANESCO
KENYA AIRWAYS / KQ
PAN AFRICAN ENERGY
TANESCO
TANZANIA BREWERIES MBEYA
MBOGO MINING
HELMAN INTERNATIONAL
FFT CLEARING AND
FORWARDING
TANESCO / KEC
AGA KHAN HOSPITAL
MAIN LINE CARRIER /
USOKAMI WIND FARM
KNAUF - MUKURANGA
SERENGETI BREWERIES
USANGU LOGISTIC

2019



JULIUS NYERERE HYDRO POWER
PROJECT (JNHPP)
JV ARAB CONTRACTOR COMPANY &
ELSWEDY ELECTRIC
HONEST LOGISTICS LTD.
MOWARA LTD.
ARIA INDUSTRIES EAST AFRICA LTD.
SEWECO INDUSTRIAL COATINGS CO LTD
SEURECA LTD.
NOVA ESPERANCA SERVICES LTD.
GRUMETI CONSTRUCTION LTD.
ASAS ENERGIES LTD.
GORILLA LOGISTICS
LAROY AGGREGATES LTD.
TOL GASES LTD.
GALCO ICD LTD.
P&N ELECTRICS LTD.
TAN CHOICE LTD.
LINK AFRICAN LOGISTICS LTD.
TANZINDIA ENGINEERING LIMITED
ALISTAIR MAURITIUS
SERENA HOTEL
AFRICA GEOPHYSICAL SERVICES LTD
YURA COMPANY (T) LIMITED
AZABU MINING LIMITED
KESI INVESTMENT
HEROCEAN ENTERPRISES (T)LTD
KAY BOUVET ENGINEERING LIMITED
TBEA BEIJING, CHINA

2020
2021
2022
2023

KEY ACCOUNT AQUISITION



JULIUS NYERERE HYDRO
POWER PROJECT (JNHPP)
TRC (Tanzania Railway Corporation)
SARENS COMPANY (T) Ltd. Agency Agreement
FIRST MOVE LOGISTICS
DB SCHENKER
HONEST LOGISTICS
FORWARDAIR
ILOB
KEDA
LONGPIG AGRISCIENCE
PENTAGON LOGISTICS
SEAKING SHIPPING AND LOGISTICS
CPP
EALS
J M BAXI HEAVY PVT LTD
BESIX BALLAST NEDAM LTD.
KHATO CIVIL MALAWI
MATRIXLINE LOGISTICS TANZANIA LTD
TBEA T LTD
SAS LOGISTICS LTD
LONG EVER LOGISTICS COMPANY LTD
MANTRAC TZ LTD
SUNDA INTERNATIONAL
KEDA CERAMICS LTD
GREENROAD INTERNATIONAL LOGISTICS

2024
2025

KEY EQUIPMENT

LIFTING EQUIPMENT

MOBILE CRANE

500 Ton (All Terrain)	TEREX DEMAG	TC3200H
350 Ton (All Terrain)	TEREX DEMAG	AC350
150 Ton (All Terrain)	LIEBHERR	LTM1150-6.1
130 Ton (All Terrain)	LIEBHERR	LTM 1030-2
80 Ton (Rough Terrain)	GROVE	
30 Ton (All Terrain)	LIEBHERR	LTM 1030-2
25T	SANY	
MOBILE CRANE	LIEBHERR	LTM 1070 - 4.1
MOBILE CRANE	LIEBHERR	LTM 1070 - 4.1
25T	TADANO	
25T	TADANO	
25T	XCMJ	
45T	TADANO	
25 T	KATO	

BOOM LIFTERS

Scissor Lifter	14 Meters Height
Scissor Lifter	14 Meters Height
10 Tons Telehandler	MERLO
Rotating Cab T/handler	MERLO
BOOMLIFTER (001)	BOOMLIFTER
BOOMLIFTER (002)	BOOMLIFTER

FORKLIFTS

TCM (4500T)	FORKLIFT	VFHM 450-24TS
CATERPILLAR	FORKLIFT	GP25NT, CAT
CATERPILLAR	FORKLIFT	GP25NT, CAT
CATERPILLAR	FORKLIFT	3500
CATERPILLAR	FORKLIFT	3500
CATERPILLAR	FORKLIFT	
TCM	FORKLIFT	LPG 3T
CATERPILLAR	FORKLIFT	6490
CATERPILLAR	FORKLIFT	GP25NT, CAT
CATERPILLAR	FORKLIFT	GP25NT, CAT
CATERPILLAR	FORKLIFT	3500 CAT
CATERPILLAR	FORKLIFT	3500 CAT
12 Ton	FORKLIFT	4500 CAT
12 Tons	LIUGONG	CLG Container Destuffer
12 Tons	LIUGONG	CLG Container Destuffer
12 Tons	LIUGONG	CLG Container Destuffer
12 Tons	LIUGONG	CLG Container Destuffer
10 Tons	LIUGONG	CLG Container Destuffer
16 Tons	LIUGONG	CLG Container Destuffer

SKID STEER LOADERS

CATERPILLAR BOBCAT	LOADER
CATERPILLAR BOBCAT	LOADER
CATERPILLAR BOBCAT	LOADER

HIAB TRUCK WITH SELF LOADING CRANE

ISUZU	Truck / trailer	4X2 - FSR 33 X 2 Units
IVECO	TRUCK	6X4 - 420' (ml 95e 15wr)

KEY EQUIPMENT

MODULAR TRAILERS

SCHEULER	TRAILER MODULAR (K25 16 Lines) Adjustable
SCHEULER	TRAILER MODULAR (K25 16 Lines) Adjustable
SCHEULER	TRAILER MODULAR (INTERCOMBI S10) 11 Lines
SCHEULER	TRAILER MODULAR (INTERCOMBI S10) 12 Lines

SKIDDING EQUIPMENT

SKIDDING SYSTEM	ENERPACK	400 Tons	X 2 Units
Push-Pull unit.	ENERPAC	LHPP25	
Skid Beam.	ENERPAC	LHSB1A	
Skid Track.	ENERPAC	LHST1	
Storage/Transport Frame	ENERPAC	LHSTSF	
Split Flow Pump	ENERPAC	SFP409SW	

SIDELOADERS

Boxloader	XTREMELOADER & IVECO	20 FT Cont. BXL X 3 Units
SWINGLIFTER	XTREMELOADER & IVECO	20 FT Cont. BXL X 2 Units
SWINGLIFTER	XTREMELOADER 45 T TRAILER	BXL (20-40FT) EXTENDABLE
SWINGLIFTING MC	TRAILER	XTREME
SWINGLIFTER	TRAILER	BXL (40 - 20) FT ADJUSTABLE
SIDELOADER	EXTREME	BXL (40 - 20) FT
6X4 SWINGLIFT	IVECO TRUCK Mounted	BXL
6X4 SWINGLIFT	IVECO TRUCK Mounted	BXL

TELEHANDLERS

TELEHANDLER	JCB	JCB 4400
TELEHANDLER	JCB	JCB 11705
TELEHANDLER	JCB	JCB 1200

PICKUP & LIGHT VEHICLES

PICKUP	light vehicles	Totota
DOUBLE CAB PICK-UP	light vehicles	Nissan NP 300
DOUBLE CAB PICK-UP	light vehicles	4wd Toyota Hilux
DOUBLE CAB PICK-UP	light vehicles	Nissan Navara
SINGLE CAB PICK-UP	light vehicles	Nissan Navara
SINGLE CAB PICK-UP	light vehicles	Nissan NP 300
MOTOR VEHICLE	light vehicles	Toyota Noah
MOTOR VEHICLE	light vehicles	Toyota Noah
SUV - HATCHBACK	light vehicles	Toyota IST - FWD
PICKUP	light vehicles	Toyota JTFDE

PRIME MOVERS

MERCEDES BENZ	Truck	6X4 - ACTROS 3348	
MERCEDES BENZ	Truck	6X4 - ACTROS 3333 S	
MERCEDES BENZ	Truck	6X2 - ACTROS 2640	X 8 Units
HOWO	Truck	6X4 371' Hp	X 3 Units
FAW 224X	Truck	6X4 - 380 HP	
MERCEDES BENZ	Truck	6x4 - ACTROS 3345 S	
MERCEDES BENZ	Truck	6X4 - ACTROS 3340	
MERCEDES BENZ	Truck	6X4 - ACTROSS 3340	
MERCEDES BENZ	Truck	6X6 - ACTROS 3341	
MERCEDES BENZ	Truck	6X6 - ACTROS 3341	
MERCEDES BENZ	Truck	6X6 - ACTROS 3341	
MERCEDES BENZ	Truck	6X2 - ACTROS 2640	
MERCEDES BENZ	Truck	6X4 - ACTROS 3331 S	
IVECO	Truck	6X4 - 420 Hp X 3 Units	
HINO	Truck	6X2 HINO	

KEY EQUIPMENT

PRIME MOVERS

MERCEDES BENZ	TRUCK	6X4 - ACTROS 3348	
MERCEDES BENZ	TRUCK	6X4 - ACTROS 3333 S	
MERCEDES BENZ	TRUCK	6X2 - ACTROS 2640	x 8 Units
HOWO	TRUCK	6X4 - 371' Hp	x 3 Units
FAW 224X	TRUCK	6X4 - 380 HP	
MERCEDES BENZ	TRUCK	6x4 - ACTROS 3345 S	
MERCEDES BENZ	TRUCK	6X4 - ACTROS 3340	
MERCEDES BENZ	TRUCK	6X4 - ACTROSS 3340	
MERCEDES BENZ	TRUCK	6X6 - ACTROS 3341	
MERCEDES BENZ	TRUCK	6X6 - ACTROS 3341	
MERCEDES BENZ	TRUCK	6X6 - ACTROS 3341	
MERCEDES BENZ	TRUCK	6X2 - ACTROS 2640	
MERCEDES BENZ	TRUCK	6X4 - ACTROS 3331 S	
IVECO	TRUCK	6X4 - 420 Hp X 3 Units	
HINO	TRUCK	6X2 HINO	

TRAILERS

3 Axle Lowbed	Trailer	Lowbed
FLATBED	Trailer	TOWING TRAILER
FLATBED	Trailer	Trailer
3 Axle Lowbed	Trailer	Lowbed
2 Axle Lowbed	Trailer	Lowbed
3 Axle Lowbed	Trailer	Flatbed
3 Axle Lowbed	Trailer	LOWBED
4 Axle Lowbed	Trailer	LOWBED
3 Axle Flatbed	Trailer	(Super Single) X 7 Units
4 Axle Lowbed	Trailer	Lowbed X 3 Units
Lowbed	Trailer	X 7 Units
6 Axle	Trailer	Lowbed
3 Axle GOOSENECK	Simba Trailer	Flatbed X 9 Units
3 Axle EXTENDABLE	Trailer	20M EXTENDABLE Flatbed X 2 Units
4 Axle EXTENDABLE	Trailer	19M EXTENDABLE Lowbed X 2 Units
4 Axle	Trailer	FESAN Lowbed
1 Axle SIMBA	Trailer	(Danglar)
2 Axle SIMBA	FUEL	Trailer
3 Axle Hybrid	Trailer	LOW BED X 8 Units
3 Axle ABS	Trailer	Flatbed X 10 Units
MODULAR SCHEULER	Trailer	Dropdeck

OIL AND GAS ENGAGEMENTS

YEAR 2017

TRANSPORTATION OF COMBINE CYCLE GAS TURBINE 240MW
DAR PORT TO KINYEREZI PHASE 2
6 X 70 Ton transformers
9 x 66 TON GAS TURBINES
PROCESS: JACKING, SKIDDING & 70 TON CRANE LIFT
CLIENT TANESCO KINYEREZI DAR ES SALAAM

YEAR 2022

REMOVAL & RETURN OF 26 TON TURBINE GEARBOX FOR SERVICE AT GAS
TURBINE GENERATOR, GT1.
PROCESS: JACKING, SKIDDING & 70 TON CRANE LIFT
CLIENT TANESCO UBUNGO DAR ES SALAAM

YEAR 2022

REMOVAL & RETURN OF 26 TON TURBINE GEARBOX FOR SERVICE AT GAS
TURBINE GENERATOR, GT3.
PROCESS: JACKING, SKIDDING & 70 TON CRANE LIFT
CLIENT TANESCO UBUNGO DAR ES SALAAM

YEAR 2022

REMOVAL & RETURN OF 26 TON TURBINE GEARBOX FOR SERVICE AT GAS
TURBINE GENERATOR, GT3.
PROCESS: JACKING, SKIDDING & 70 TON CRANE LIFT
CLIENT TANESCO UBUNGO DAR ES SALAAM

YEAR 2023

REMOVAL & RETURN OF 26 TON TURBINE GEARBOX FOR SERVICE AT GAS
TURBINE GENERATOR, GT3.
PROCESS: JACKING, SKIDDING & 70 TON CRANE LIFT
CLIENT TANESCO UBUNGO DAR ES SALAAM

YEAR 2024

REMOVAL AND RETURN OF 32 TON GAS TURBINE ROTOR MACHINE FOR
SERVICING ON GAS TURBINE GENERATOR, GT2.
PROCESS: JACKING, SKIDDING, 70 TON CRANE LIFT
CLIENT TANESCO UBUNGO DAR ES SALAAM

YEAR 2024

RELOCATION TO MTWARA OF 250 TON GAS TURBINE ENGINE TM 2500 TM
16-20 MW,
PROCESS: TRANSPORT FROM UBUNGO, LOAD ON LCT VESSEL
PROCESS: OFF LOAD IN MTWARA AND DELIVER TO SITE 27KM FROM PORT
CLIENT TANESCO UBUNGO DAR ES SALAAM / MTWARA

YEAR 2024

REMOVAL AND RETURN OF 32 TON GAS TURBINE ROTOR MACHINE FOR
SERVICING ON GAS TURBINE GENERATOR, GT2.
PROCESS: JACKING, SKIDDING, 70 TON CRANE LIFT
CLIENT TANESCO UBUNGO DAR ES SALAAM



PROJECT CASE: MTWARA PORT OPERATIONS

For the TANESCO project, Raphael Logistics executed the transportation of a main trailer with gas turbines and auxiliary equipment from the port by barge. The project required a high degree of precision and coordination, considering the heavy nature and complexity of the cargo.

KEY HIGHLIGHTS OF OUR SUCCESSFUL OPERATIONS INCLUDE:

EFFICIENT BARGE TRANSPORT:

We facilitated the movement of equipment to Mtwara Port via specialized barges, ensuring that heavy cargo reached its destination securely.

COMPREHENSIVE EQUIPMENT HANDLING:

From lube oil systems to air intake trailers, our team managed all logistics aspects, ensuring the safe delivery and installation of essential components.









PROJECT CASE: DRILLING MACHINERY OPERATION

This was part of the Lube Oil System or Hydraulic system that is essential for cooling, lubrication, and overall operation of drilling machinery or generators. The visible connections and hoses are vital for distributing essential fluids under controlled pressure, ensuring the efficient operation of the equipment during energy pr

In the context of logistics operations, this system were carefully transported and installed using specialized equipment, demonstrating Raphael Logistics' experience in handling complex, sensitive cargo such as gas turbine auxiliaries and ensuring its safe delivery and integration into the overall system.



LUBE OIL SYSTEM OR HYDRAULIC SYSTEM

PART OF DRILLING TRANSPORTATION ITEMS TO MTWARA PORT



SELF-PROPELLED MODULAR TRAILERS



• DISCOVER OUR SPMT

- Modular heavy cargo trailer, equipped with hydraulically lift and lowering motions.
- Adaptable in height to take slopes easily.
- Mechanical and electronical steering.
- Outstanding maneuverability (up to 360°steering).
- Powered by a powerpack fixed on the trailer.
- Modular in width and length.
- Nett capacity up to 43,5T/axle line.

• ADVANTAGES

- Complete service package including SHEQ.
- Easy to operate in confined space.
- Perfect load spreading.- central control unit.
- Ideal for IN-plant operations.
- Unseen robustness.
- Sized to be transferred on standard flat racks.
- Accurate alignment/positioning of the load.
- Marvellous end solutions in combination with other Sarens equipment.





sarens

SELF-PROPELLED MODULAR TRAILERS TYPE

• SOLUTIONS

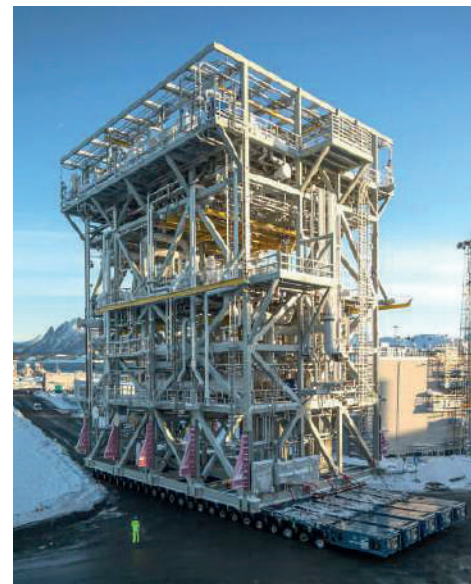
- Civil market e.g. bridge installations
- Installation of rotating equipment in power plants-all type of load-out operations
- Projects related handling of top sides and jackets in the offshore market
- Port related moves e.g. STS crane replacements.

• FLEET

- Kamag (2400 - S - ST)
 - width 2,43m
 - Min. pickup height 1,25m
 - Comfortable stroke 0,5m
 - Axle spacing 1,4m
 - Gross capacities 34 up to 48T
 - Steering angle: 360°

- Kamag (25 SP)
 - Width 3,0m
 - Min. pickup height 1,0m
 - Comfortable stroke 0,5m
 - Axle spacing 1,5m
 - Gross capacities 36T
 - Steering angle: 65°

- Goldhofer
 - Width 3,0m
 - Min. pick up height 1,0m
 - Comfortable stroke 0,5m
 - Axle spacing 1.5m
 - Gross capacities up to 34T
 - Steering angle: 55°



WHY CHOOSE RAPHAEL LOGISTICS FOR YOUR PROJECT NEEDS IN TANZANIA

PROVEN EXPERTISE IN COMPLEX PROJECTS

Raphael Logistics has demonstrated a high level of competence in handling complex, large-scale projects, particularly in oil drilling and power generation sectors. We have successfully transported and managed critical equipment for various high-demand projects, ensuring operational success and efficiency.

INDUSTRY-SPECIFIC KNOWLEDGE

With a specialization in logistics solutions for the oil, gas, and energy sectors, including projects for TANESCO, we have the industry insight required to handle sensitive and technical equipment. This includes synchronizing generators, hydraulic systems, lube oil systems, and more.

COMPREHENSIVE AND RELIABLE PROJECT MANAGEMENT

From transportation to on-ground management, Raphael Logistics provides end-to-end solutions. We have an excellent track record of delivering results without delays, ensuring all project timelines are met while adhering to the highest standards of safety and compliance.

LOCAL EXPERTISE WITH GLOBAL STANDARDS

Operating within Tanzania, Raphael Logistics brings local knowledge combined with international best practices. We understand the regional logistics landscape, regulatory requirements, and infrastructural challenges, allowing us to offer tailored solutions that fit local conditions.

CUSTOMER-CENTRIC APPROACH

We prioritize client satisfaction by offering flexible and scalable logistics solutions that cater to unique project needs. Raphael Logistics' team works closely with clients to ensure seamless execution, clear communication, and a commitment to cost-effectiveness.

M4/71/03/2025 MECHANICAL CONTRACTOR CLASS 4

C2/169/03/2025 CIVIL CONTRACTOR CLASS 2

B2/224/03/2025 BUILDING CONTRACTOR CLASS 2





























OUR WORLD



M4/71/03/2025

MECHANICAL WORKS CONTRACTOR



CONTRACTORS REGISTRATION BOARD

HEAD OFFICE
P.O. Box 13754
DAR ES SALAAM
Tel: 255 22 2131160,
21379632
Fax: 255 22 2137964
E-mail: crb@contractors.org
Web: www.crb.go.tz

Ref. No. : M2/398

Date: 13/03/2025

M/S. RAPHAEL LOGISTICS (T) LIMITED
P.O BOX 62353 UBUNGO

Dear Sir / Madam,

Re: REGISTRATION AS MECHANICAL WORKS CONTRACTOR

This is to confirm that after having paid Registration Fee and year 2024 Annual Subscription Fee vide our Receipt No. CRB-R-2024-8642 dated 13/03/2025 you are now registered with this Board as a MECHANICAL Contractor Class 4 with the effect from 13/03/2025.

Your Registration Number is : M4/71/03/2025

You are now allowed by law to take up MECHANICAL contracts worth up to TShs. 900,000,000.00 for any one single contract.

Your registration Certificate is being prepared and you will be informed when it is ready for collection.

Yours faithfully,
CONTRACTORS REGISTRATION BOARD


RHOBEN NKORI
REGISTRAR

C2/169/03/2025

CIVIL WORKS CONTRACTOR



CONTRACTORS REGISTRATION BOARD

HEAD OFFICE
P.O. Box 13754
DAR ES SALAAM
Tel: 255 22 2131160,
21379632
Fax: 255 22 2137964
E-mail: crb@contractors.org
Web: www.crb.go.tz

Ref. No. : CW2/7125

Date: 13/03/2025

M/S. RAPHAEL LOGISTICS (T) LIMITED
P.O BOX 62353 UBUNGO

Dear Sir / Madam,

Re: REGISTRATION AS CIVIL WORKS CONTRACTOR

This is to confirm that after having paid Registration Fee and year 2024 Annual Subscription Fee vide our Receipt No. CRB-R-2024-8575 dated 12/03/2025 you are now registered with this Board as a CIVIL Contractor Class 2 with the effect from 13/03/2025.

Your Registration Number is : C2/169/03/2025

You are now allowed by law to take up CIVIL contracts worth up to TShs. 8,000,000,000.00 for any one single contract.

Your registration Certificate is being prepared and you will be informed when it is ready for collection.

Yours faithfully,
CONTRACTORS REGISTRATION BOARD


RHOBEN NKORI
REGISTRAR

B2/224/03/2025

BUILDING WORKS CONTRACTOR



CONTRACTORS REGISTRATION BOARD

HEAD OFFICE
P.O. Box 13754
DAR ES SALAAM
Tel: 255 22 2131160,
21379632
Fax: 255 22 2137964
E-mail: crb@contractors.org
Web: www.crb.go.tz

Ref. No. : BW2/7823

Date: 13/03/2025

M/S. RAPHAEL LOGISTICS (T) LIMITED
P.O BOX 62353 UBUNGO

Dear Sir / Madam,

Re: REGISTRATION AS BUILDING WORKS CONTRACTOR

This is to confirm that after having paid Registration Fee and year 2024 Annual Subscription Fee vide our Receipt No. CRB-R-2024-8576 dated 12/03/2025 you are now registered with this Board as a BUILDING Contractor Class 2 with the effect from 13/03/2025.

Your Registration Number is : B2/224/03/2025

You are now allowed by law to take up BUILDING contracts worth up to TShs. 5,000,000,000.00 for any one single contract.

Your registration Certificate is being prepared and you will be informed when it is ready for collection.

Yours faithfully,
CONTRACTORS REGISTRATION BOARD


RHOBEN NKORI
REGISTRAR



JESHINI ROAD, MAKUBURI | P. O. BOX 62353 | DAR ES SALAAM | TANZANIA

24/7: +255 715 206036
Hotline: +255 622 206035

USA: +1(202) 916 0713
KENYA: +254 702 206 036

Email: info@raphaellogistics.co.tz
operations@raphaellogistics.co.tz
www.raphaellogistics.co.tz
Follow us: facebook.com/raphaellogistics
twitter.com/raphallogistics
www.raphaellogistics.co.tz

